



Installation Guide

Sprinter Slider Door Screen

Designed for Ford Transit 2020+



Parts Included:

- Screen Doors and Trim
- Frame Velcro Strips
- Screen Door Sweep

Tools / Supplies Needed for Install:

- 2" Auto Masking Tape
- Rubber mallet
- 1.5" to 2" Puddy Knife
- Sharpie
- Rubber Weatherstrip Hook tool (optional)
- Slotted or Flathead Screwdriver
- Spring Clamps

Installation Notes

- All directions right and left are made from standing outside and facing the door
- This can be a one-person job, but is easier with two
- Read all instructions before starting
- 90 to 120 minutes to install

1 Gasket Removal Prep

Use a Sharpie to mark the approximate center of the upper gasket and van. Place the marks close to the gasket and out of sight to remain hidden after replacement.



2 Remove Gasket.

2A) Starting at the mark, gently pull the rubber gasket away from the van, following the direction of the lip.



2B) Work evenly toward each corner, then down the sides. Do not pull more than 12" from the van to avoid stretching the gasket.



2C) Stop pulling when you reach the van floor. Tuck gasket under van and out of the way.

NOTE: Your van may be different than photos. Remove gasket as low as you can go to attach velcro strip. DO NOT remove gasket along bottom.

2D) Some vans will have exposed fabric now, which will need to be removed. If none, then skip to step 3D.



3 Velcro Tape Prep & Attachment.

3A) Using a utility knife, start cutting the fabric 1/2" from lip edge. Cut a 1/2" all around the door where there is fabric present.



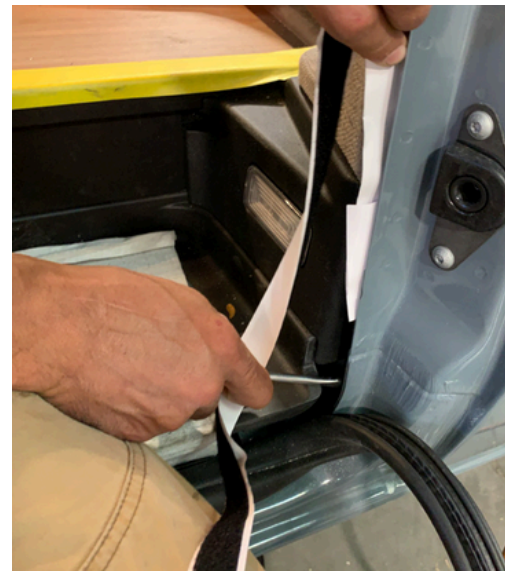
3B) Remove fabric by peeling off. Taking care not to pull any excess fabric beyond 1/2" cut.



3C) Using a screwdriver will help work the fabric off.



3D) Grab the 3/4" velcro with white peel off backer and peel back 1"-2" of backer and slide into lower right side slot. Using a screwdriver, slide velcro into slot and begin to peel back white backing while working your way up pillar. You may have to peel off and reset, which ok.

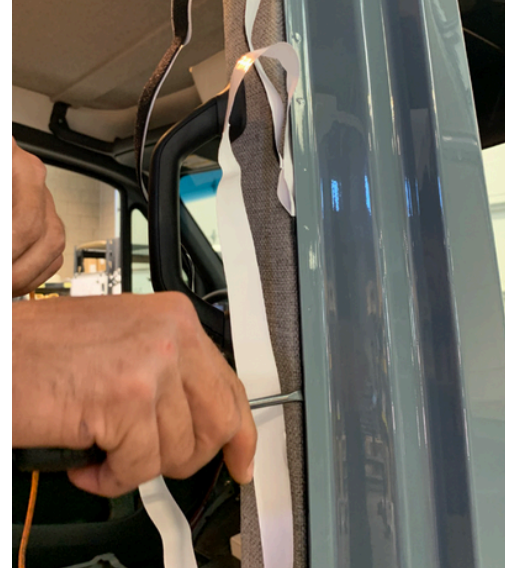


3 Velcro Tape Prep & Attachment.

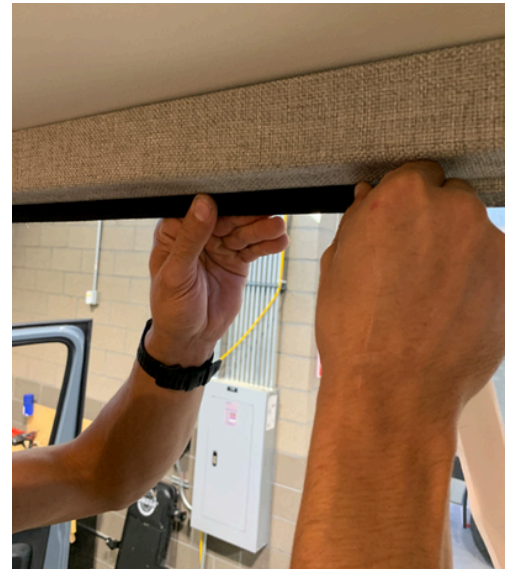
3E) Pull tape up to top of pillar and slide in to place w/o taking backer off. While removing backing about 6" to 8" at a time, press velcro in place maintaining the edge of the velcro and door trim.



3F) Use a screwdriver or putty knife to press velcro against the pillar as you work your way up.



3G) As you work up to the corner you will have little humps of velcro on inside curve. This is ok as they will be trimmed later. Continue along top of door to left corner.



3 Velcro Tape Prep & Attachment.

3H) When you get to the left side upper corner the velcro will want to pull away from curve. You will need to cut relief cuts and press back into place.

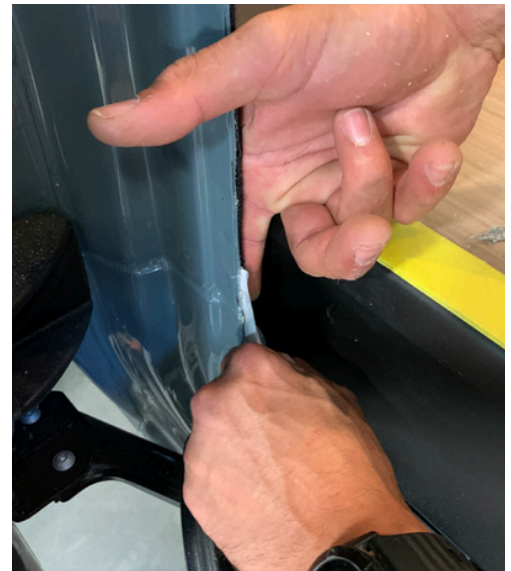
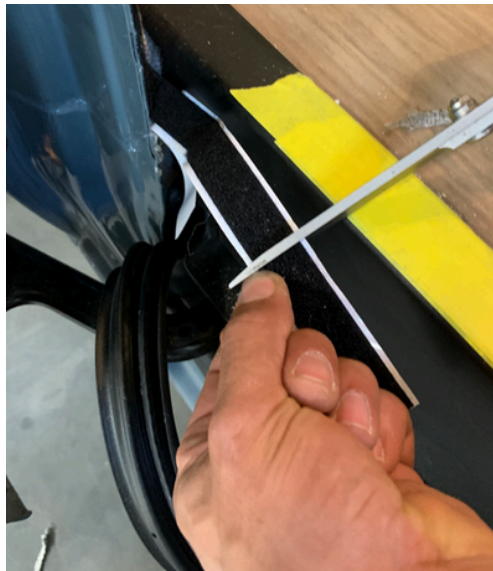
You may have to cut relief cuts back at the upper right corner too.

The same procedure will happen at the lower curve in the door frame. You may have to cut relieve cuts along these corners too.



3I) When you get to the bottom, pull the tape down to. Determine the cut point at the bottom of the pillar. Trim to fit your van floor. You will have extra tape.

Press the remaining into place and use tool if needed to make sure it's adhered.



3 Velcro Tape Prep & Attachment.

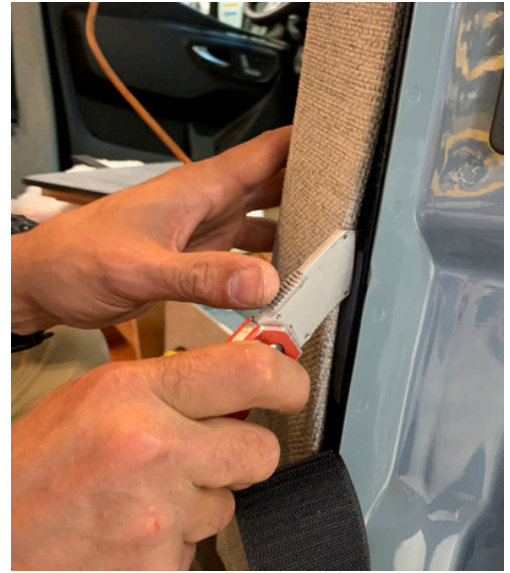
3J) Trim overlapping velcro even with metal edge.



3K) 1/2 way up the right pillar there is a rubber block that will get in the way of the velcro loop. Pull the pillar cover back where you can get access to the block.



3L) Take a utility knife and cut about 1/4" off the block and pull out the rubber pieces.



3M) Place 2" auto masking tape on fabric pillars. This will make it easier in the next step not to have velcro stick to the fabric. Skip this step if your van has plastic pillars.



3N) Take the 2" Loop and fold it with 1/2" fold. This will be pressed up against the velcro loop that was just placed on the van. If it doesn't stick to velcro, you folded it the wrong direction.

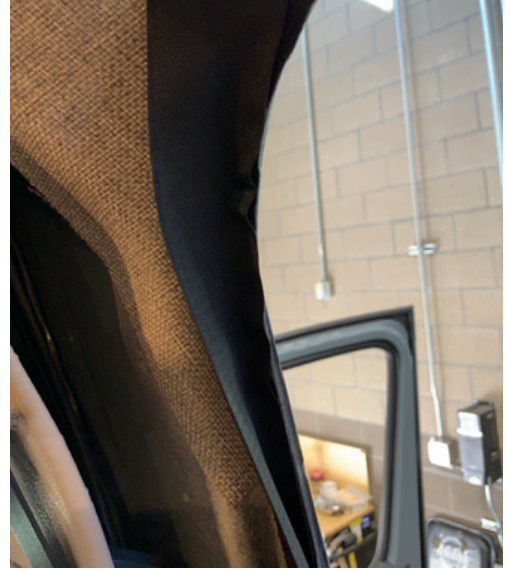


4 Screen Velcro Attachment.

4A) Start at the step on the lower right side and work up by pressing the wide velcro hook to velcro loop which is on van. Line up the outside edge to lip. Keep it lined up all the way around the door. You can use the putty knife to push it into place.



4B) Attach velcro all the way through the corner and continue along roof line to left upper corner.



4C) Press velcro in place, making sure as smooth as possible.



4D) You will need to make relief cuts on radius. This will require 4-5 cuts on each corner.



4E) Continue to press the velcro all the way to the floor.

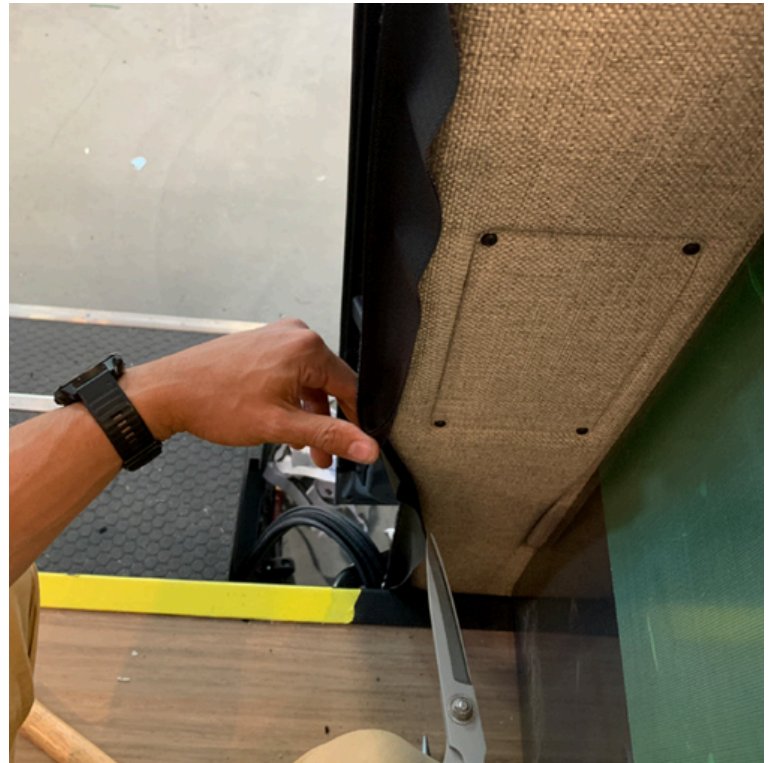


4 Screen Velcro Attachment.

4F) Make relief cuts anywhere the velcro loop is stressed or tight. Cuts should be about 3/4" apart.



4G) Press the velcro in place down to the step. Trim the velcro at the lowest point and press it into place.



5 Gasket Reattachment

PRO-TIP: Hold up gasket and make sure there are no twists. Nothing is more frustrating than getting one side on and have a twist on the other side and have to redo it.

5A) Start by placing pre-marked sharpie dot on gasket up at matching dot on van. Open up flange and press into roof edge.



5B) Take a spring clamp and clamp gasket in place to hold it up while finishing gasket placement.



DO NOT USE a rubber mallet to secure the gasket during this phase. Instead, use only your hand to press it into place. Using any tool other than your fist may damage the gasket. The mallet will be utilized at a later stage.

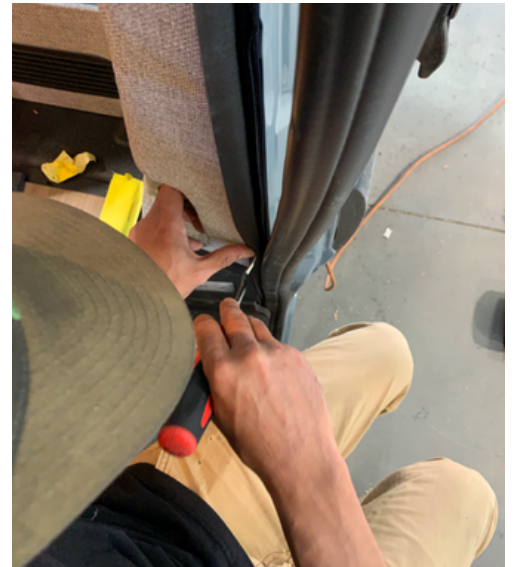
5C) Work your way to front corner using a weather strip tool. Use the tool to open gasket slot. Do not stretch!



5D) Continue along the top of the door, placing the gasket to the corner and down the pillar about 3 inches.



5E) Start at the bottom of that pillar and work your way up. Use the weather strip tool to help place the gasket



5 Gasket Reattachment

5F) Use your fist to pound gasket onto lip up to the corner.



5G) Work from bottom to top until you get to the bulge. Work from the top and then the bottom until flat.



5H) Once gasket is seated, you may now use the rubber mallet. Be careful not to pound too hard. You are just securing it.



5I) Start at left side bottom and work your way up to corner like before.



5J) Just after the first curve, stop and put a spring clamp. Move up to roof spring clamp and work from there to corner.



Use the hook tool to get through corner. Continue down to spring clamp. Follow up with mallet to secure gasket.



6 Screen Attachment

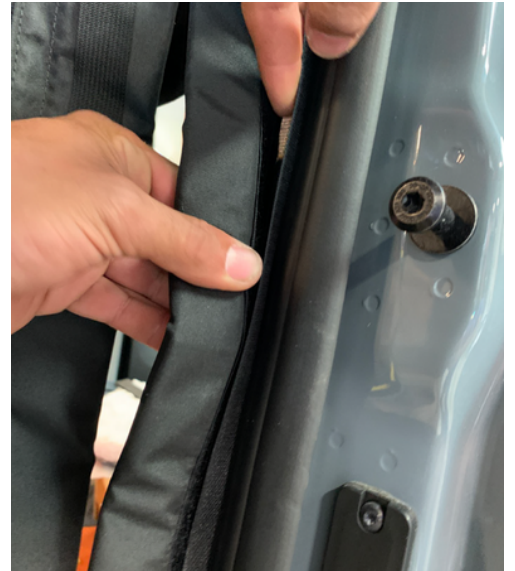
6A) Start at upper right point and attach screen frame velcro to van velcro. Try to keep as smooth as possible. Make sure TOURIG Logo is on outside.



6B) Before going down past corner, check length before sticking side velcro. Adjust up or down as needed.



6C) Once length is good, start moving up attaching velcro until you get to the upper right corner. Adjust as needed.



6D) Place upper left corner on velcro. Relief cuts can overlap here.



6E) Make sure the length is correct and adjust as needed.



6F) Work your way up from bottom to just after mid curve.



6 Screen Attachment

6G) Re-adjust top if need be to make side fit.



6H) Finish up the attachment and adjust anywhere the velcro is too tight or too loose.



6I) Re-adjust and attach where the screen looks smooth as possible from outside. This part of process may take 1-3 times to get correct, so dont worry.



6J) Attach door sweep so no void can be seen at step. You may move this up and down to get a good seal.



6K) Screen should close completely down right side with magnets and should have no voids. If void is seen, then adjust velcro piece to insure proper fit.



Lower Attachment Notes

Because all vans have different build outs, the step area attachment will vary from van to van. We can not predict what your van has, so our instructions may be vague for this area.

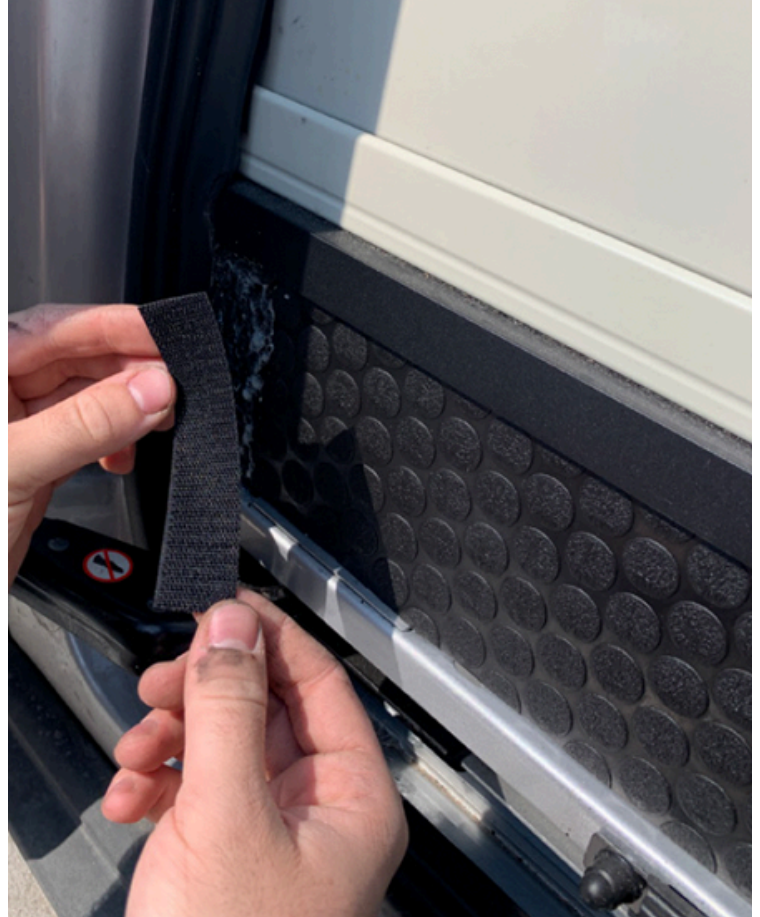
You will have to use your best judgement on how to secure the lower section of velcro to the area on the right at step. This may be done with a self tapping screw, a nut and bolt or sometimes with just the velcro tape. It depends on your particular van.



On the left side, there sometimes will be a cabinet in place which will make it harder to get the velcro in place. It is possible to slide the tape and the velcro in behind the cabinet, but will take some patience and a putty knife to help. You may want to apply some painters tape to protect your cabinet from scratches while using putty knife.

At this step, you can place the Velcro with the adhesive back on the step face as your attachment point.

The bottom line is that you must do your best to ensure that the screen is attached around the perimeter. Voids make for places where pesky insects enter.



If you have any questions,
please contact us at:
info@mytourig.com or
303.710.2914